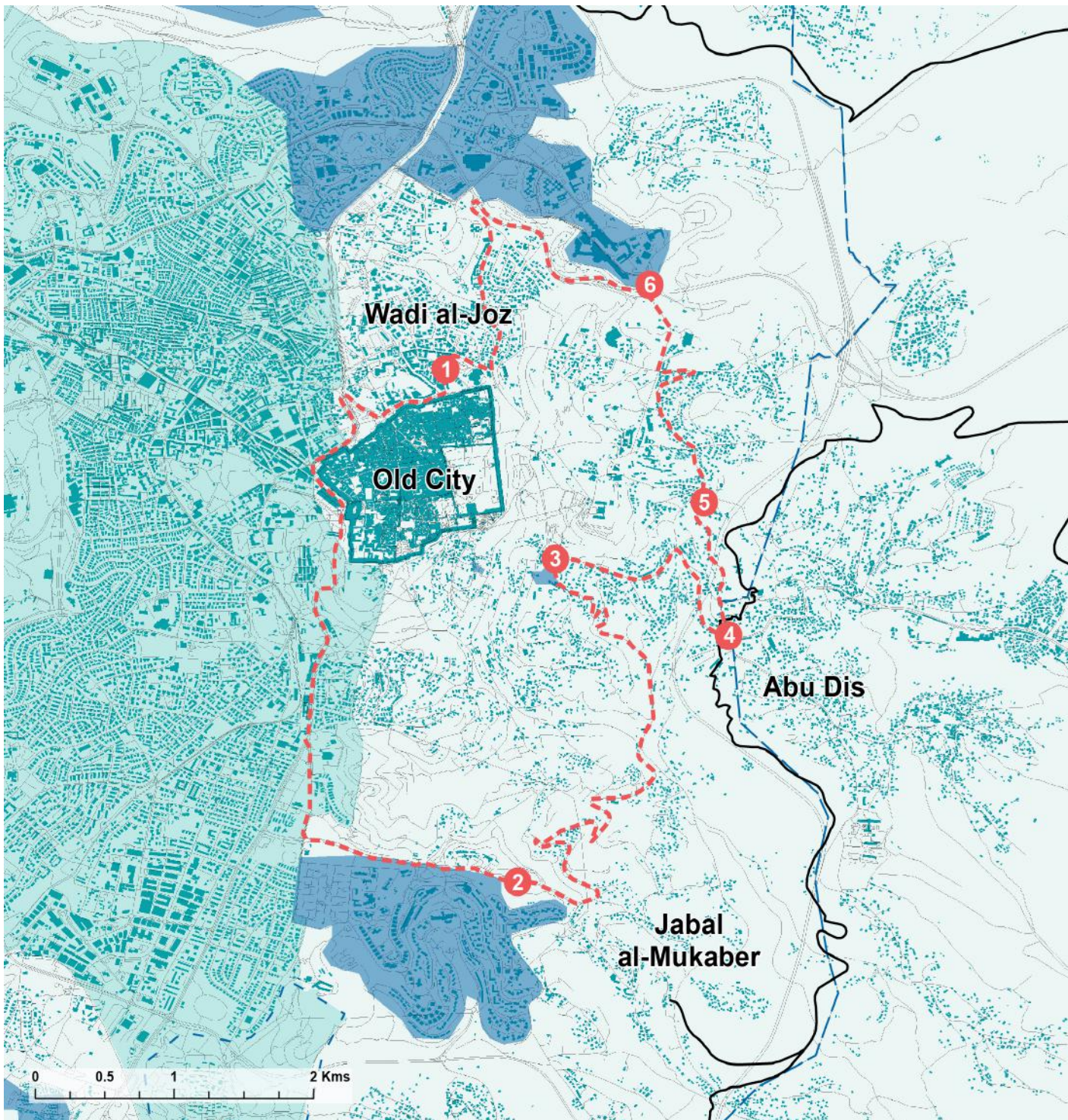
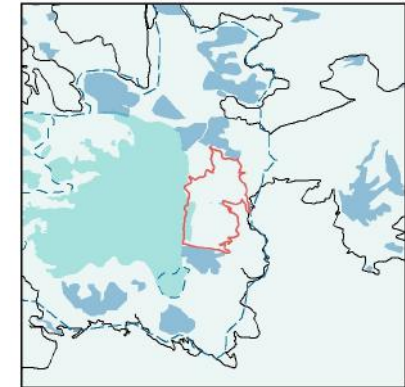


# Grassroots Political Tour

The Grassroots Jerusalem Political Tour explores the breadth of al-Quds (Jerusalem) as it exposes visitors to the current realities and resistance of Palestinian communities amidst Israel's suffocating occupation.



## Legend

- Tour Stops
- - - Tour Route
- The Western Part of Occupied Jerusalem
- Colonies
- Annexation Wall
- - - Municipal Boundaries

SOURCES: The location of 1967 colonies are taken from Peace Now data. The names of villages destroyed during the Nakba are from palestineremembered.com. All other data is from OpenStreetMap.

© Grassroots Jerusalem 2015.